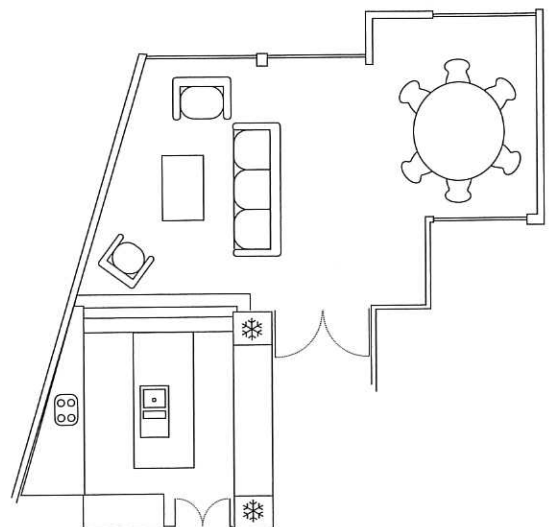


Left: A bank of cabinetry conceals a larder fridge, wine storage unit and freezer, whilst ceiling-height units provide the Kemps with additional storage.





**Above:** A glossy composite worktop and blue-grey glass splashback complement the neutral colour scheme. Contemporary, swan-neck brassware underlines the minimalist aesthetic.

**Opposite page:** The bathtub's striking modern form makes a real style statement in here. Fashioned from Cian – a renewable material manufactured from a blend of acrylic polyester resin and mineral fillers – it has an exceptionally solid feel, despite its slim design.

quality materials,” explains Marc. “One of the reasons we chose Holloways of Ludlow for the design and installation of the kitchen was because its ideas were the most creative and sympathetic to the space. It also took a craftsman’s approach so that the end product was tailored to our particular needs.”

Indeed, the kitchen – with its pebble-coloured porcelain floor tiles, spray lacquered cabinetry, oak veneer island and worktop in a composite grey stone – has become the hub of the house. Sunlight streams through a roof lantern into the preparation space and the floor-to-ceiling windows at the rear of the property mean that, throughout the day, the room is filled with a wonderful natural light.

Steps delineating the kitchen from the seating and dining areas below had a significant bearing on the design of the kitchen, as Emma Jordan from Holloways of Ludlow explains. “Marc and Bethan wanted an island in the centre of the kitchen, so that they could chat to guests as they prepared a meal, but there needed to be enough space either side – both for safety and to ensure that sight lines from the hallway through to the garden were not obscured,” she says. “One of the defining features of the kitchen is the semi-alfresco feel and it was essential to link it to the outside space.”

High on the Kemps’ list of priorities was an elegant, uncluttered kitchen that could withstand the demands of busy family life. A bank of tall cabinets across one wall conceals a larder fridge and freezer, while a breakfast cupboard houses an integrated coffee machine, power supply for the toaster and shelving for cereals. Children’s crayons and colouring books are tucked away in specially designed drawers, and

a bespoke unit – half pull-out larder, half shelved storage – was created in an awkward space around a steel beam.

Indeed the island, with its contemporary inset sink, not only creates a striking focal point, it has also been designed to maximise storage. “The island accommodates a dishwasher and bins for food waste and recycling. We worked to ensure that the worktops can be kept clear and the views towards the garden take centre stage,” says Emma.

The master bathroom, situated at the rear of the house and also overlooking Richmond Park, is a similarly airy space. An arresting oval bathtub is positioned near the window and affords glimpses of the greenery beyond. A vast shower enclosure, meanwhile, clad in obsidian green mosaic tiles, and a blind in natural tones also gesture to the property’s parkland setting.

“From early on, we knew we wanted a sun-filled bathroom and decided to fit a frosted glass door at the entrance to provide additional light,” explains Marc. As in the kitchen, a clutter-free space was also crucial. “The vanity unit, which was made by a local joiner, means that we can keep all our bath products hidden away, and the shelving area at the rear of the bath conceals a laundry chute to the basement,” he adds.

The extension and renovation have undoubtedly been a huge success. “I have a real fondness for Saturday lunchtime now, as it tends to be the first time in the week that we congregate as a family,” says Marc. “Our new kitchen is a particularly sociable space where we can entertain friends or host children’s birthday parties; it has totally transformed the way we live our lives.”

KBB